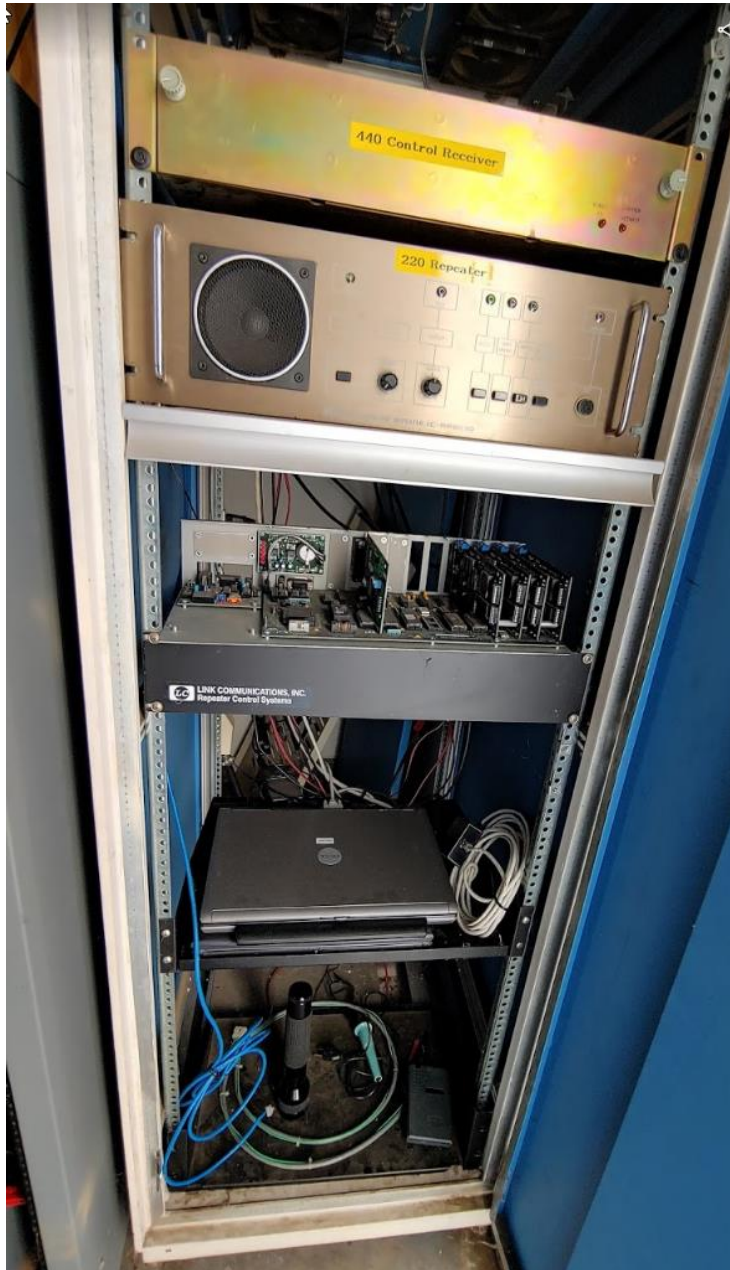


# W40VH NEW 224.66 REPEATER



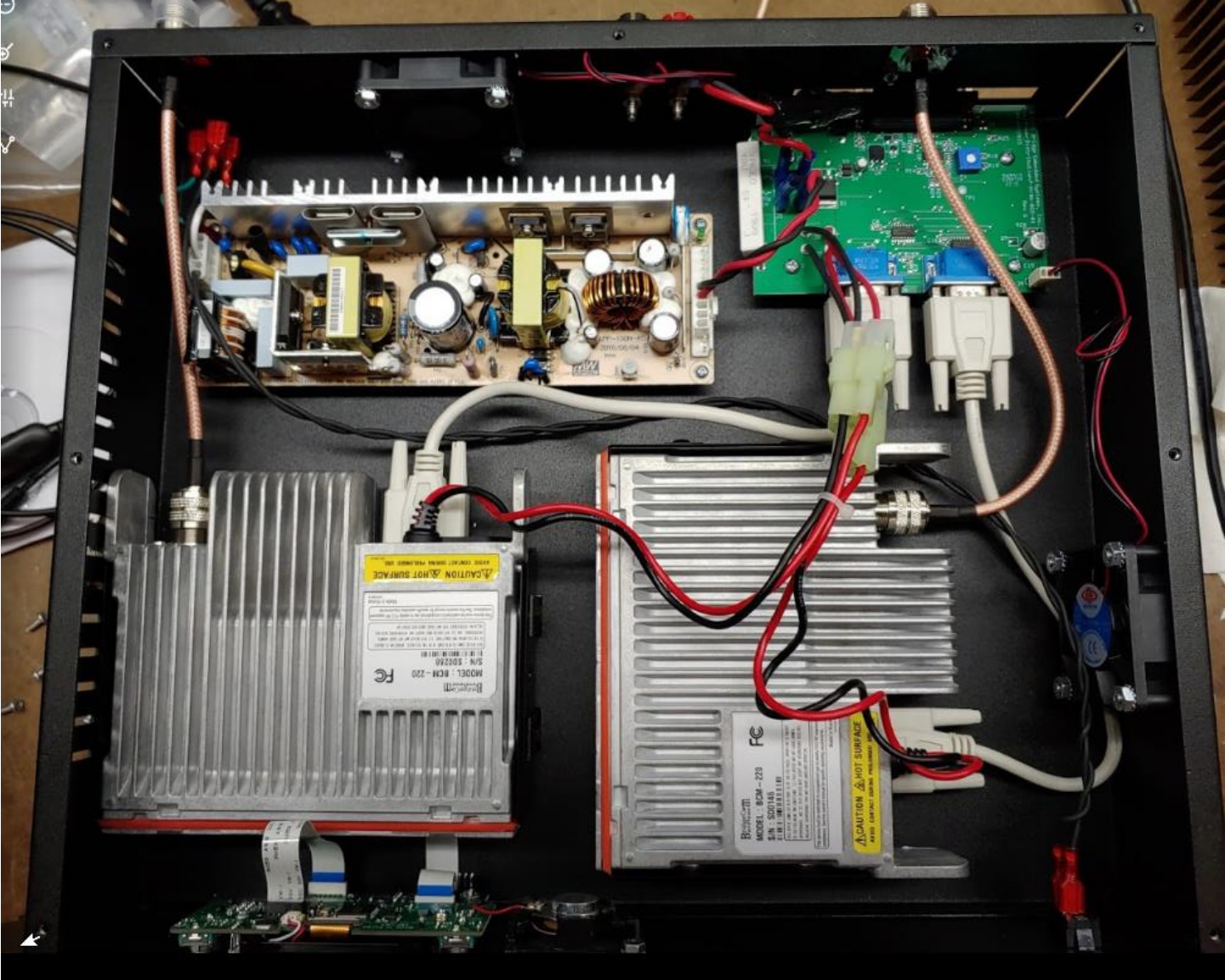
# BACKGROUND

- 224.66 REPEATER AT NOVEC IS OVH'S OLDEST HARDWARE
- NOT EASY TO CONFIGURE OR CONTROL
- UNDER-UTILIZED
- 442.2 MACHINE LINKED FOR NETS IS REDUNDANT TO 443.5 – SAME BAND, SIMILAR COVERAGE
- 442.2 SWITCHES TO DIGITAL MODE AT TIMES
- PROPOSAL – UPGRADE 224.66 AND LINK TO IT FOR NETS (AND MORE)



## THE OLD REPEATER





# SHIELDING ISSUE



# NEW REPEATER IN RACK WITH MINI-PC AND DMK URI USB RADIO INTERFACE



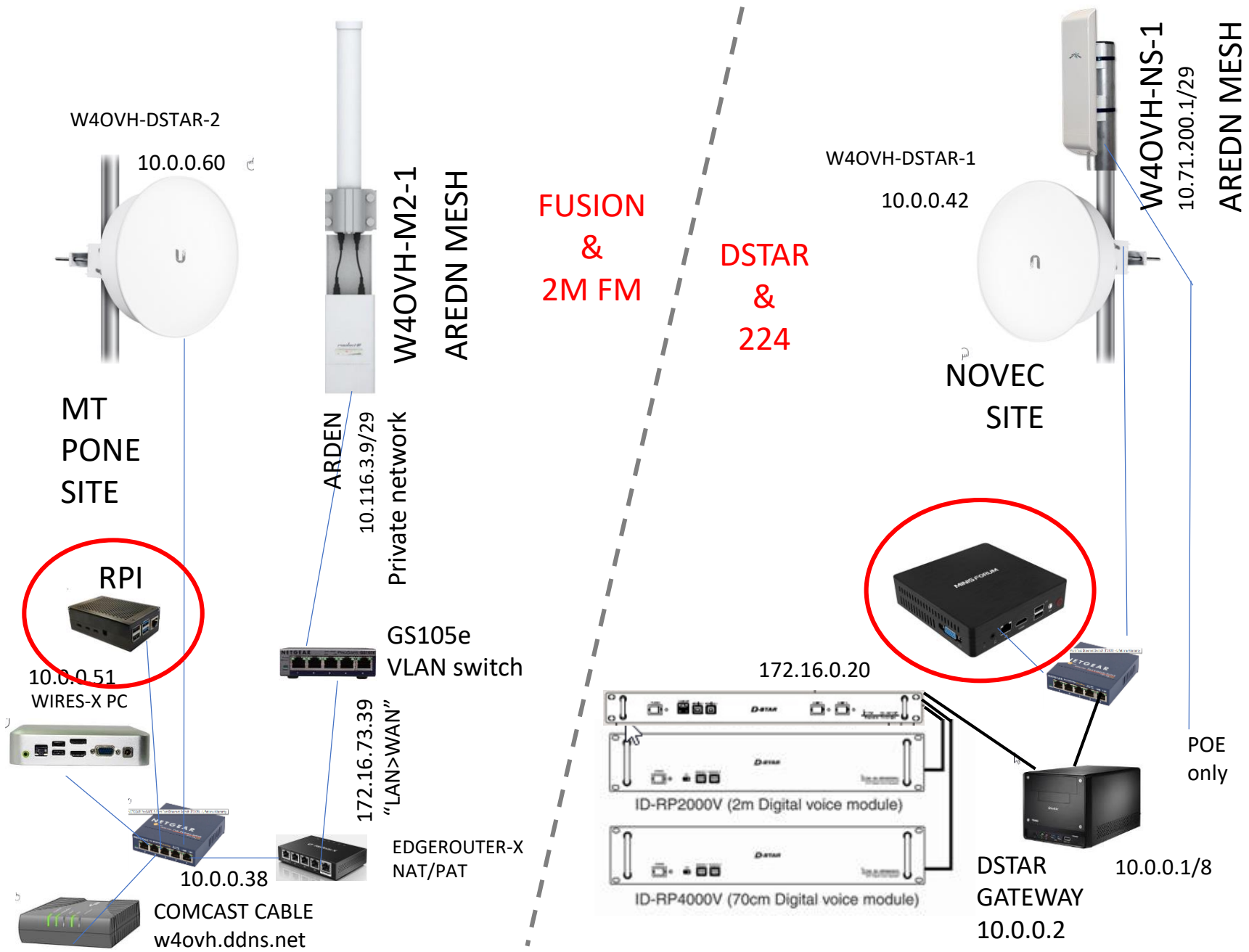
# MINI PC

- Desktop Mini PC
- Quad-Core Intel Celeron J3160 Processor (up to 2.24GHz), 4GB DDR3
- NVMe 128GB SSD
- 6-10 W DC POWER

USED FOR DSP  
FUNCTIONS:  
CTCSS/NOISE SQL

GN31





W4OVH-DSTAR-2

10.0.0.60

MT  
PONE  
SITE

RPI

10.0.0.51  
WIRES-X PC

10.0.0.38

COMCAST CABLE  
w4ovh.ddns.net

ARDEN

10.116.3.9/29

Private network

GS105e  
VLAN switch

172.16.73.39  
"LAN>WAN"

EDGEROUTER-X  
NAT/PAT

FUSION  
&  
2M FM

DSTAR  
&  
224

W4OVH-DSTAR-1

10.0.0.42

NOVEC  
SITE

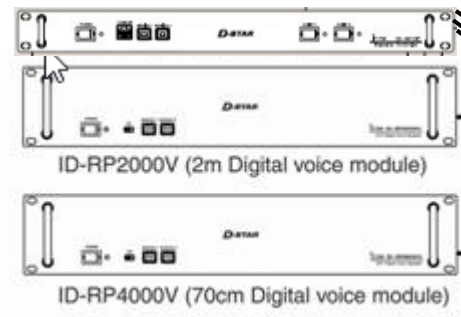
W4OVH-NS-1

10.71.200.1/29

AREDN MESH

POE  
only

172.16.0.20

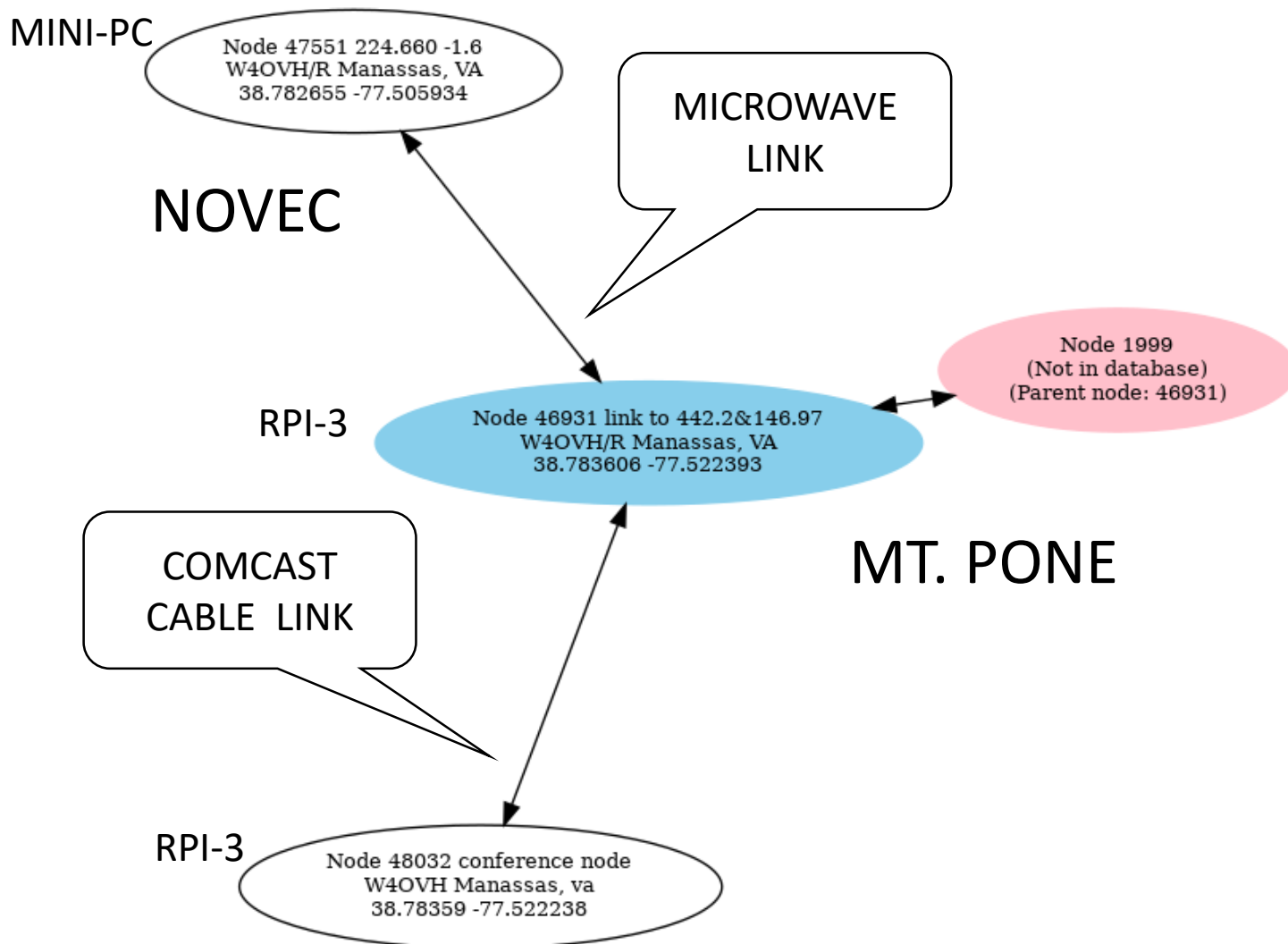


DSTAR  
GATEWAY  
10.0.0.1/8  
10.0.0.2

10.0.0.1/8



# ASTERISK – IAX2 - LINKING



Allstar Link [surrounding node 46931] status of 02/18/20 15:29:56 GMT